



LAMBDA KAPPA SIGMA
International Pharmacy Fraternity

Blue & Gold Triangle

October, 1984



1984-1986 GRAND COUNCIL

L. to R. (seated) Nancy Horst, Grand Treasurer; Gloria Doughty, Grand Vice President; Patricia Kienle, Grand President; Becky Hunter, Grand Secretary; (standing) Judy Riffée, Honorary Advisor; Ruth Brown, Mideastern Regional Supervisor; Donna Fujii, Western Regional Supervisor; Luanne Betz, Southern Regional Supervisor; Michelle De Balko, Northeastern Regional Supervisor; Donna Dancer, Midwestern Regional Supervisor; Marilyn Haberle, Honorary Advisor; Avis Ericson, Honorary Advisor.

GRAND PRESIDENT'S MESSAGE

Welcome to a new biennium for Lambda Kappa Sigma! Not only have we just completed an outstanding convention concluding our most successful two years ever, but we look forward to the future with much optimism.

The convention held this past summer in Seattle is detailed elsewhere in this issue. I urge you to look through the reports, so you can catch the flavor of the proceedings. Fraternity business and professional discussions blended with social functions — certainly the epitome of what our founders envisioned!

The most forward-reaching step that we took at the convention was the establishment of the position of Executive Director. We have grown tremendously in the recent past — doubled in size in the last ten years — and have done so with many hours of work from our volunteer officers and committee members. The convention body — your representatives — felt that the time has come to supplement this effort with a paid staff director.

So, our very first Executive Director

has been employed! Mary Grear, our immediate past Grand President has taken on this task on a part-time basis. Mary brings to the office 10 years of Grand Council experience (Regional Supervisor, Treasurer, and Grand President), 4 years of Professional Fraternity Association experience (Board Member, Secretary, and Vice President), and countless hours establishing and supervising our International Office on a voluntary basis. Clearly, no one is better qualified than Mary as she helps guide LKS through the 1980's.

While Mary's position is one of coordination, your position in LKS is one of participation. Your thoughts and ideas are constantly needed. Please write to the International Office or to a Grand Council member as you note items of interest to LKS. Your participation has been the key to the success of our Fraternity for 71 years, and will be for many years to come!

Patricia C. Kienle,
Grand President

WOMEN'S HEALTH ISSUES

The Grand Councils of Lambda Kappa Sigma and Kappa Epsilon Fraternities for Women in Pharmacy have begun working on a joint project dealing with the health issues of women. It is the intent of the project that the members of the organizations can use the information directly as well as in public education. The project will be called — "Women's Health Issues; an educational project by Kappa Epsilon and Lambda Kappa Sigma." The committee has begun its work (by long distance conference calls) and will have an informational booth at the ASHP Midyear Clinical Meeting in Dallas (December 2-6, 1984) and at the APhA Annual Meeting in San Antonio (February 16-21, 1985). The booth will present an educational program on PREMENSTRUAL SYNDROME in a slide/tape format. The booth at the ASHP Midyear and at the APhA Annual Meeting will need to be staffed during the times that the Exhibits are open. Any LKS members who will be attending the ASHP Midyear or the APhA National Convention are urged to volunteer for an hour or two during the exhibit time. During the ASHP Midyear the booth will be open from 11 am until 3 pm daily on Monday, Tuesday and Wednesday and from 11 am until 2 pm on Thursday. If you can help, please contact: Judy Riffée; RR #1 Box 360, Cedar Creek, TX 78617. The committee is excited about this joint venture between

Cont. on page 11

Seattle,
The
Emerald
City...



convention highlights,
pictures inside...

GRAND PRESIDENTS AT CONVENTION



L. to R. (seated) Adele Lowe, Marilyn Haberle, Norma Wells, Pat Tanac; (standing) Harriet Lescauski, Julia Pishalski, Judith Riffée, Mary Grear, Patricia Kienle, Margit Harrison.

GRAND COUNCIL PRECONVENTION MEETING July 21st-24th

Grand Council members and collegiate representatives to the Grand Council arrived in Seattle on Saturday, July 21st. After checking into the Holiday Inn Crowne Plaza, we were whisked off to the home of Jean McLauchlan for a wonderful dinner and an equally wonderful view of Seattle and Mount Rainier at dusk.

GC meeting began early Sunday morning. After calling our meeting to order, Mary Grear, Grand President, gave each GC officer the opportunity to discuss her report for the biennium. We then began discussion of the agenda items.

Cookbook sales haven't been as high as expected. In the past Biennium, chapters received \$1.75 per cookbook sold and \$1.75 went to the Convention Delegate Fund. It was proposed that from now on chapters who have sold one or more cases of cookbooks get the entire \$3.50 profit rebated.

The importance of the Responsible Drinking Program, first launched at the 1983 Regional Meetings, was stressed by Adele Lowe, who had the opportunity to attend a national BACCHUS meeting.

For the first time, Kappa Epsilon and Lambda Kappa Sigma are joining together in an effort to provide information in a variety of ways on specific health issues concerning women. This comes in the form of the Women's Health Issues Committee.

A Regional Supervisor Training Program is now being established in order for more uniform visitations to occur.

At the Regional Meetings during the Biennium, there was an overwhelming desire of the Fraternity as a whole to establish the position of Executive Director. The 1982-1984 Grand Council reviewed all applications and made a recommendation to the 1984-1986 Grand Council. The new GC then will decide and hire the person to fill the ED position. The Executive Director is an employee of the Grand Council.

The LKS Educational Trust is a public charity (according to the IRS) and therefore enjoys a triple exemption status: 1) Money given to the fund is tax-exempt, 2) LKS pays no taxes on the money in the Trust, and 3) Grant recipients are not required to pay taxes on their award.

At this point, the meeting was adjourned for the day. We were "wined and dined" at a Chinese restaurant as guests of Donna Fujii. After dinner some of us had the opportunity to go down to the Waterfront and then to the Space Needle.

Early Monday morning, many of us went to Green Lake for some fresh air and exercise. (Judy Riffée jogged; the rest of us walked!)

The 1984-1986 Strategic and Marketing Plans were both extensively reviewed and then adopted by GC. The Strategic Plan, distributed to delegates in a convention packet, is a result of goals established during the past Biennium. The Marketing Plan is a means to expand the Fraternity. The idea of new chapters in Canada, and possibly Mexico and Puerto Rico, will be investigated. There are several locations where LKS sisters are interested in forming alumnae chapters. GC recognizes that expansion is important, yet realizes that maintaining healthy existing chapters is equally significant.

Grand Council recommended that we reaffirm the Fraternity's stand on hazing.

It was recommended to propose adoption of the programs on Pharmacists Against Drug Abuse (PADA) and Responsible Drinking. Project HOPE will remain Lambda Kappa Sigma's international philanthropy. In addition, October has been named HOPE month for the 1984-1986 Biennium.

Liability Insurance to cover LKS members and chapter advisors at Fraternity functions and acts of commission or omission by officers can be obtained for approximately \$1,000 per year.

The Finance Policy and the 1984-1986 Budget was presented by Grand Treasurer Nancy Horst. It was examined thoroughly, and then accepted to be recommended for adoption by the Convention body.

Pre-designed programs for the 1983 Regional Meetings seemed to work well. This aids in making all five Regional Meetings more uniform in content. At the next Regional Meeting, there will be a special training session for chapter Advisors; therefore, it is suggested that Advisors attend the Regional, as well as International Conventions.

Scoring for the Efficiency Cup and Efficiency Gavel must be revised due to proposed changes affecting the International Office, Executive Director, and Grand Editor. It has been suggested that a Professional Project Award be presented. This idea will be investigated by the 1984-1986 Grand Council. The new Ruth Davies Flaherty Award, in the form of a certificate, is given for distinguished service within a chapter (collegiate or alumnae).

Rosemary Fox treated Grand Council and Chi Chapters to a delicious dinner held in her home Monday evening, the 23rd of July.

Afterwards was "playtime"; many of us went down to the Bay to take pictures of the sunset and then travelled to the island of Bremerton by way of a ferryboat.

Grand Council met once again bright and early Tuesday morning. The convention was to begin that afternoon and several items of business needed to be taken care of beforehand.

In order to continue to make the Blue and Gold TRIANGLE more appealing and useful, Grand Council used a goal-setting method to establish the direction that the Blue and Gold TRIANGLE should take. A mission statement for the TRIANGLE will be developed from ideas gathered.

The Grand Council adjourned at 1PM Tuesday, July 24th after many committee meetings were planned for the remainder of the week.

Respectfully submitted,
Susan Zetzi,
Phi Collegiate
Midwestern Regional
Representative

CONVENTION NEWS

Wednesday, July 25th

July 25th marked the first day of the Twenty-eighth Biennial Convention. At 8:00 a.m. our opening breakfast began with Pat Tanac leading us in the invocation. A delicious breakfast followed accompanied by special favours supplied by our hostess chapters, Chi Collegiate and Chi Alumnae. After this feast we were extended warm and at times humorous greetings from George Benson, an Emerald City councilman, Dr. William Campbell, Chairman of Pharmacy Practice at the University of Washington School of Pharmacy, and Mary Gear, our Grand President.

At 9:00 a.m. the opening business session of the convention was brought to order by Mary Gear. This was followed by a touching memorial service in honor of our sisters who passed away during the biennium. Selection of the nominating committee followed. The members were:

Nancy Horst (Western Region)
Judy Riffie (Southern Region)
Frances Curran (Mid-Eastern Region)
Kathryn Zareva (North-Eastern Region)
Susan Zetzl (Mid-Western Region)

After completion of this business, Mary Gear gave special thanks to Donna Fujii, Chi Alumnae, for her terrific work on the decorations, posters and place cards which adorned our meeting and dining rooms. Presentation of Grand Council reports on their activities during the past two years and recognition of the various committee chair-persons was next on the agenda. To conclude our morning business session the collegiate chapters presented reports on their activities during the past biennium.

At 12:00 p.m. we were treated to yet another fantastic meal. It was a buffet-style meal which was co-sponsored by Alpha Lambda chapter. Once again we were delighted to find favours at our tables from the Chi chapters and Alpha Lambda. After lunch, Nancy Faulkner and Sandra Mattson gave fascinating accounts of their work in the Fred Hutchinson Cancer Research Centre. To conclude the lunch break Avis Ericson and Mary Gear recognized our 50 year members, ten of whom were in attendance at the convention.

Presentation of alumnae reports opened the afternoon session. Following this two of our collegiate chapters, Alpha Kappa and Pi were presented with \$100 cheques as rewards for their outstanding cookbook sales. Congratulations!!

The next portion of the afternoon was devoted to Collegiate and Alumnae conferences where specific problems and concerns of each group could be discussed. To close our afternoon session Becky Hunter, Southern Regional Super-



visor, entertained us with a slide presentation entitled "A Pharmacist's View of China." Becky had recently returned from China and was kind enough to share her adventures with us. To end our hectic day, our hostess chapters presented a number of door prizes to lucky recipients. After such a packed day we were ready for our free evening which found many of us off to follow the Yellow Brick Road and discover some of the secrets of the Emerald City of Seattle.

Faternally,
Janice Williamson
Alpha Lambda Collegiate

Collegiate Conference

On Wednesday July 25th, the first full day of the twenty-eighth Biennial Convention, the collegiate chapters met for the Collegiate Conference. Judy Riffie led this conference; the main topics of this discussion were rushing, pledge programs, and hazing.

At the regional conventions the International Office passed out guidelines for the programs in an effort to standardize pledging. This will make the pledge period a more meaningful time for the pledges. The pledge period is a time of training and it should be utilized to gain the enthusiasm of the pledges since this is a time when the chapter has the pledges' full attention. The pledges should be made to feel that they are part of the Fraternity and the pledge class should be able to work together as a unit. The pledge period should be well defined so the pledges know what will occur during this very important period. The pledges do not have to prove themselves during their pledge period. The

chapter should add their own creative ideas to the pledge period. Judy Riffie stated that it is better to have a small pledge class with women committed to LKS, than a large pledge class that doesn't do anything.

On the subject of rush, the International Office is designing a rush program with guidelines for rush. The guidelines will also include some ideas for rush themes.

The elimination of hazing in pledge programs is an important area of concern for LKS. Judy Riffie read the statement on hazing that appears in the pledge program. Hazing is defined as any situation where there is physical or mental discomfort, embarrassment or ridicule, or possibly any physical harm or injury.

We discussed the responsible drinking program and it was stated that it is not necessary to omit liquor at parties, but the chapter should provide a non-alcoholic beverage so the nondrinkers won't feel pressured to drink the liquor since everyone else is drinking.

We discussed the difference between inactivity and resignation. When a member doesn't pay her dues she is considered inactive. Resignation is when a member petitions the chapter to resign from the Fraternity. Efforts should be taken to regain their interest in the Fraternity. It is better to have a member become inactive than to let her resign.

Another topic of discussion was the LKS Educational Trust. Not many chapters contributed money to this educational fund. The interest on the money that is donated is used for the Cora E. Craven grants. It would be nice if each chapter would sponsor a fund-raiser for the sole purpose of sending it to the Trust.

We also discussed the difference between an Honorary Member and a Patron. An Honorary Member is someone that the chapter wants to be a sister but because of circumstances such as membership in another pharmacy fraternity, she is unable to join the fraternity. The woman does not have to be in the field of pharmacy, but may have made a great contribution to the field of pharmacy. A Patron is someone who is not a member of LKS but has worked hard for the Fraternity and the chapter wants to honor her or him.

An announcement was made that on November 16-18, 1984, there will be a symposium on "Women in Pharmacy." It will be held in Richmond, Virginia. The members were encouraged to attend.

Also at the next Regional Meeting there will be a workshop for chapter Advisors. It will show the importance of the Advisor's role in the Fraternity.

Faternally,
Theresa Hedgecock
Omega Collegiate

Alumnae Conference

The alumnae conference was attended by over 40 alumnae members, both chapter members and Stray Lambs. A brief review of the problems noted in chapter reports was held. The basic problem is the identification of a mechanism to interest seniors and new graduates in the alumnae chapters. The group was reminded of an idea from the 1982 alumnae conferences: to use the big/little sister program between the alumnae and collegiate chapters to serve as a transition mechanism. The group also discussed the Pharmacists Against Drug Abuse program as a possible alumnae professional program for the biennium. This way, both chapter members and Stray Lambs could participate in a coordinated professional effort for the Fraternity. An added advantage of this program is that ACPE accreditation is available for the professional preparatory programs. This could be done at no cost to the Fraternity. Comments were very positive; it was noted that this program should not be presented to community groups without adequate individual preparation. One thought was to have the collegiates inservice the alumnae on current drugs of abuse in the particular communities. The group voted to support this effort for the biennium, and a resolution was prepared for acceptance by the convention body. The group also reviewed the bylaws proposals, with particular emphasis on the deletion of the Grand Editor position. The group reviewed the budget, with particular emphasis on the proposed Executive Director position and the International Office. A second alumnae conference was held later in the week. An upbeat discussion of potential for expansion was held. In addition, specific thoughts were mentioned on how alumnae can support the anti-hazing statement and the concerns of the Fraternity.

Thursday, July 26th

Our day began with a tour to the Chateau St. Michelle Winery. After our tour and wine tasting, the Chi sisters had prepared a picnic lunch for us. We then toured the University of Washington and Arboretum before returning to the hotel for our afternoon business session.

The Strategic Plan for the 1984-86 biennium was reviewed. The plan addresses the primary goals of increased communications, office management and funding. Nancy Horst, Grand Treasurer, presented the budget proposals. Discussion of the proposed By-Laws amendments followed.

Thursday evening, we gathered for the Professional Fraternity Association Dinner. Our guest speaker for the evening was Marianne Ivey, Past President of the American Society of Hospital Pharmacists. Following our dinner we assembled in Regional Conferences to discuss the issues before us.

Friday, July 27th

The fourth day of the Convention proved to be a very productive business day. After enjoying a free morning in the beautiful city of Seattle, the sisters returned to the Crowne Plaza Hotel for the afternoon business session. Becky Hunter started off our afternoon with a very interesting slide presentation on her Tour of Russia in which she described pharmacy and health care in Russia. Becky thanked LKS for support of her trip.

Adele Lowe gave her report on the LKS Educational Trust. The Trust was first initiated in 1975 and since then has attained its most important purpose of perpetuating a financial program that will assist members in reaching their goals in pharmaceutical education. Last year's grants totaled \$5,900. To keep up the large number of grants awarded

each year we must increase our donations to the Trust. Donations can be given by a chapter, an individual, or may be given in order to honor a collegiate member or alumnae.

The proposed By-law changes were then read by our Grand Secretary, Avis Ericson. Of the ten proposals presented to the convention body, six were passed, two defeated, and two referred to committee. The Convention Delegate Fee was increased to \$250. Also, due to the need to make the operation of LKS more efficient, consolidation and expansion of the Grand Editor's duties into paid staff duties were adopted. There were also changes concerning the Dr. B. Olive Cole Graduate Educational Grant. The grant is not only available to alumnae members working toward advanced degrees in the pharmaceutical sciences, but also to those members working toward advanced degrees in any area. A motion from the floor was passed to form a Nominations Elections Revisions Committee.

In the afternoon session we voted on the 1984-86 Budget. The proposed fraternity budget was read by Nancy Horst, our Grand Treasurer. The budget was accepted by the Convention. Just before adjourning the afternoon session, the Nominating Committee presented the officers slated. Tau Collegiate Chapter finished up the session by presenting their newly revamped professional program, "What is a Pharmacist?"

After another superb dinner put on by the Chi Sisters, the business session continued. During the evening session, Grand Council recommendations were presented.

Just before breaking into Collegiate and Alumnae Conferences, the Responsible Drinking Film, "Booze and Youse", was viewed. The evening session concluded with caucuses. Ideas and common problems were discussed. On the collegiate level, important ideas stressed included placing a statement in your Rush Program stressing quality not quantity in our pledge classes, fund raising for the Educational Trust, and Liability Insurance.

Tau Chapter would like to congratulate Chi Chapters for a wonderful convention. We would also like to congratulate the new Grand Council, we look forward to working with you. Lastly, it is hoped that the special friends we made in Seattle will lead to stronger communications between chapters and renewed friendship at future Conventions. See you all in Indianapolis.

Respectfully Submitted,
Marijo Kraisinger
Tau Collegiate



Feeding the ducks at Chateau Ste. Michelle Winery

Saturday, July 28th

Convention's final day opened with a breakfast followed by Grand President, Mary Grear, calling our business session to order. Election of the new Grand Council was held. Seven Grand Council recommendations were read and voted on by the Delegates. We accepted the following recommendations that the Hazing Statement adopted by Lambda Kappa Sigma be reaffirmed by this convention body; that the proposed Responsible Drinking Program be adopted; that the "Pharmacists Against Drug Abuse" (PADA) project be adopted as a fraternity wide project; that we continue with Project HOPE as our international philanthropy; that we retain our current position with respect to Title IX; that all chapters and members support the LKS Educational Trust to as great an extent as possible; that we accept the recommendation of the Trust Liaison Committee that there be 18 Cora E. Craven and 1 Dr. B. Olive Cole Educational Grants for each year of the biennium.

Business discussed included the Women's Health Issues project, liability insurance for the Grand Council and chapters, and the Ruth Davies Flaherty Award. The Alpha Lambda Flaherty Award was presented to Tammie Morrison at this session. Regional caucuses followed and sites were selected for 1985. We were invited to visit Indianapolis for Convention in 1986 and reminded of our 75th Anniversary to be celebrated in Boston in 1988. Lexington, Kentucky was chosen as the site for the 1990 Convention. The report of the Memorial and Resolutions Committee was given by Michelle DeBalko. Hearing no further business, the Grand President declared the meeting adjourned.

Following an afternoon break, sisters and friends gathered for the banquet concluding our 28th Biennial Convention. We were honored with the presence of eight past Grand Presidents. Al Lowe, Bill Pishalski, Bob Tanac, John DeBalko, and Sam Grear received Patron certificates acknowledging their support of the Fraternity and their wives throughout many years of service to LKS.

The 1982 Award of Merit Recipient, Gloria Doughty (Alpha Nu, University of Kentucky), presented this biennium's award to Marilyn Harris (Tau, Duquesne University). Tammie Morrison (Alpha Lambda, University of British Columbia) was named the Outstanding Collegiate by vote of the convention attendees. Efficiency Cup winner was Alpha Kappa, University of Georgia. Second Honorable Mention certificate was presented to Tau Chapter, Duquesne University, and First Honorable Mention Certificate went to Alpha Zeta Chapter, St. Louis College of Pharmacy. The Efficiency Gavel was presented to Alpha Zeta Alumnae, St. Louis, MO.

Patricia Hornall Tanac received the 1984 Distinguished Service Citation. Her

many years of dedication and service to the Fraternity as an active member of Chi chapters, advisor, committee member, and Grand Council offices held culminating in her selection as Grand President and as an Honorary Advisor were recognized.

The 1984-86 Grand Council was installed by retiring Grand President, Mary Grear. Judy Riffie presented the retiring President with a jeweled gavel. In making her presentation, Judy recognized Mary's contributions to the Fraternity and especially her contribution of helping develop the vision of the future for Lambda Kappa Sigma.

Honorary Advisors for the 1984-86 Biennium include Marilyn Haberle, Alpha Zeta Alumnae, Judy Riffie, Alpha Omicron Alumnae, and Avis Ericson, Alpha Alumnae. The banquet program closed with the traditional singing of the Lambda Kappa Sigma Song. A reception followed, honoring the newly elected Grand Council.

CONVENTION RESOLUTIONS Memorial Resolution

Whereas, our sisters:

Mary Connolly Livingston, Alpha, Founder of this Fraternity;

Belle Dirstine, Mu, Grand President 1928-32;

Bertha Sugden Tuttle, Alpha;

Voila Hammer Blann, Anna Bea Webster, Theresa O'Braitis, and Alice Siwicki, Gamma;

Fay Hall McDermott and Cora E. Gould, Zeta;

Frances Gibson, Mariana Clark, Geraldine Furguie, Elizabeth Gesregen, Elizabeth Helm Lynch, Irene Rice Van Deboe, Irene Yearick and Anna M. Connelly, Eta;

Olga Arnold, Theta;

Genevieve Nancy Young and Marie Slaybaugh Graham, Mu;

Eleanor Di Cicco, Thelma Burke, and Louise Mieszczyński Olszewski, Omicron;

Marie Janetti Fleming, Pi;

Marjorie Austin Johnson, Upsilon;

Darlene Rose Hanlin and Dolores Ann Rolfs, Chi;

Mildred Das Norris, Psi;

Nancy Thomas Smith, Alpha Epsilon;

Diane Emerson Hillard and Marcella Roll, Alpha Mu,

have completed their earthly tasks and have responded to the heavenly call; and

Whereas, during their years of membership in Lambda Kappa Sigma they were dedicated members of their chapters, giving of their time and talents, therefore,

Be It Resolved, that we pay tribute to their memory and express sympathy to their loved ones.

Professional Resolution

Whereas, faculty advisors are an invaluable asset to collegiate chapters and their involvement is important to the efficient operation of the chapter, and

Whereas, advisor participation in Chapter Meetings, Regional Meetings, and Bien-

nial Conventions is desirable,

Be It Resolved that LKS will strive to foster involvement by offering Advisor workshops at the Regional Meetings.

Whereas, Lambda Kappa Sigma, a fraternity for women in pharmacy, is concerned about the continued increase in drug abuse, especially among young persons, and

Whereas, McNeil Pharmaceuticals has an organized program for Pharmacists Against Drug Abuse available for presentation to schools, parent groups, church groups and other interested persons.

Be It Resolved, that Lambda Kappa Sigma, in convention assembled, adopt this program as an international professional project for 1984-86.

Whereas, women in pharmacy are a vibrant force in our profession, and

Whereas, interaction both professionally and socially is necessary for women in pharmacy, and

Whereas, Lambda Kappa Sigma encourages participation in pharmacy forums,

Be It Resolved, that the members of LKS are encouraged to actively participate in the Symposium on Women in Pharmacy in Richmond, Virginia, November 16-18, 1984.

Whereas, hazing blemishes the fraternity image, and

Whereas, "hell nights", "hell weeks", or hazing in any form are not allowed by LKS, therefore

Be It Resolved that no LKS member shall participate in or perpetuate any activity which may be construed as hazing.

(Hazing is defined as any act which demeans or embarrasses or may cause bodily or mental harm to another)

Whereas, the objectives of LKS are to promote the happiness and usefulness of its members to create a center of enjoyment, friendship, and culture, and to encourage a high standard of professional ethics and scholarship; and

Whereas, alcohol abuse interferes with the ideals set forth by the fraternity, and

Whereas, LKS promotes the profession of pharmacy, stands for guarding good health and maintaining high behavioral standards of the college campus and in the community; and

Whereas, LKS abides by all local, state and federal laws and all university and college regulations concerning the use of alcohol; and

Whereas, it is evident that educational programs are needed to emphasize the dangers involved in alcohol abuse; therefore,

Be It Resolved, that the Grand Council and membership of LKS discourage the abuse of alcohol and promote a responsible drinking program where the individual has a choice of moderate and responsible drinking or abstinence.

Whereas, Lambda Kappa Sigma is a fraternity for women in pharmacy, and

Whereas, LKS women strive for offices in other organizations, and

Whereas, an outstanding woman who is a wife, mother, teacher, lawyer and Congresswoman has been nominated to high national office, therefore

Be It Resolved, that Lambda Kappa Sigma, in convention assembled, congratulate Geraldine A. Ferraro on her nomination to be a candidate for Vice President of the United States.

Dear sisters of Lambda Kappa Sigma,

On behalf of both collegiate and alumni Chi chapters, I thank you for your enthusiastic response to the 28th Biennial Convention which we hosted here in Seattle. We had a wonderful time planning and organizing the various aspects of the convention and your expressed appreciation of our efforts is very rewarding.

Sincerely yours,

Chris Ferris
President, Chi Collegiate



Al Lowe, Patron Certificate recipient



Bob Tanac, Patron Certificate recipient



Bill Pishalski, Patron Certificate recipient



Wearing chef hats, Alpha Kappa and Pi Chapter delegates received \$100 checks for their chapters top cookbook sales.



Alpha Zeta Alumnae Chapter representatives Nancy Konieczny, Marilyn Haberle, Mary Grear and Jane Tennis with the Efficiency Gavel.



Distinguished Service Citation Recipient, Pat Tanac



Above: Award of Merit presented by Gloria Doughty, 1982 recipient to Marilyn Harris

Left: Outstanding Collegiate, Tammie Morrison, receives Lamb from Grand President

Below: Members attending the 28th Biennial Convention



CAMPAIGN FOR PROGRESS

A contributor to the Campaign for Progress recently wrote that "LKS doesn't look the same as it did some years ago, I like the new look!" We like the new look, too! In addition to the hard work and dedication of our many volunteers, we owe thanks to the many sisters who are supporting the "Campaign for Progress" with their dues and contributions. This list of sisters shows early contributors. Now is your chance to add your name to the list by contributing today. Watch for the next issue of the TRIANGLE and be sure your name is included! We've reached the half way mark toward our fund raising goal. Please help us to go over the top! "My Lambda Kappa Sigma experience at my university was important to me!"

Alpha Massachusetts College of Pharmacy and Allied Health Sciences

Paula Cardozo Anderson
Gail Phillips Bucher
Anna Cipriani
Carol Cronin
Laurie McGowan Dionne
Carolina Galassi Dondero
Sue Corkum Folger
Mary Ellen Gillespie Hollis
Elizabeth Hopkins
Doris Joe
Carole Moyer Judge
Kathy A. Kerleyza
Alison J. Kimball
Nancy Jean Merrill
Alicia Hebb Newman
Marcia A. Perednia
Audrey Kelly Rodriguez
Francine Thiboutot

Beta Albany College of Pharmacy, Union University

Therese Poirier

Gamma University of Illinois

Helen Krupinski Fronczak
Cecelia Furmaniak
Julie Jurczendo Howard
Marie Biedke-Leach
Harriet Lescauski
Nancy Andersen Lyon
Carmelita Scafuri Moczynski
Olga Popil
Elizabeth Wassmer Raiman
Therese Hula Remblake

Delta University of Pittsburgh

Sarah Lemmon Magnotti
Amy Myers
Roberta Wilson Thomas

Epsilon University of Maryland

Emma Morgenstern Frey

Eta Philadelphia College of Pharmacy & Science

Vivian Margaret Barsky
Patricia Brady
Debra Brandmier
Elizabeth Wagner Chase
Mildred Garrell DeLucco
Ann Druckenmiller
Judith Ann Jurman

Alice Kerchner
Patricia Clancy Kienle
Mary Ellen Kitler
Mary Barnisky Kuryloski
Ruth E. Miller
Nancy Ho Mitchell
Charlotte Bartakovits Pavis
Mindy Bowman Schlachter
Marie Stapinski
Mary Elsenboss Tyrrell
Pamela Yun-Fong Yih

Theta Creighton University

Judith Anderson
Patricia Foley Howard
Kathy Bucher Mickie

Lambda University of Southern California

Ikuko Ito
Edna Logan Ivans
Kay Lee Song
Helen L. Toy

Mu Washington State University

Marian Haines Christensen
Henrietta Rubin Churchill
Alice Mattern Colman
Carol A. Dean
Patricia Duncan
Catherine Pettibone Ehmsen
Karen Enberg Foster
Barbara Allen Franklin
Alice Swanson Friel
Ada Brinkman Galvin
Lisa Allen Gasseling
Margaret Garthe Harrison
Christine Vinkenes Hicklin
Jean Lehrer
Julia Puterbaugh Marshall
Louise Smith Miller
Linnea Powell
Gertrude Horn Reavis
Helen Louise Rowland
Paula Schulz
Jayne Stumpf

Nu Drake University

Gloria Bernstein
Alice M. Coenen
Suellen Doman
Kelly A. Doty
Christine Bussema Groth
Larissa Kaseoru
Linda Sue King
Carol Krueger
L. Kylee Ormes
Martha Severance

Sally Lehman Sounhein
Mary Eloise Stoikes
Kathy Mowers Swift

Xi University of Rhode Island

Theresa Visconti Stanley

Omicron Wayne State University

Marlene Delp Fichter
Mary Janik Johnston
Ann Partyka Kaspers
Lucy Wilczinski Kohler
Olga Bravo Kravchell
Linda Ford Lane
Katie Moy Lim
Mary Beth O'Connell
Lillian Russell
Joanne Polkowski VonMach

Pi Rutgers the State University of Rhode Island

Robin Humcke Bogner
Mary Karnas DiTore
Lori Feller
Elizabeth Lange
Dolores Damiano Peterson
Mary Teresa Tymon

Rho Oregon State University

Margaret Fowler
Janice Bush Hogue
Clara Siverly Jansson
Charlotte Loring
Jennifer Ott
Deana M. Thomsen
Muriel C. Vincent
Marilyn Wong

Tau Duquesne University

Kathleen M. Boje
Pat Dinkel Brenckle
Lou Butler Bushick
Rose Tarloski Celecki
Sonja Fuchs DeGray
Patricia Miller Hogan
Mary Jo Reilly
Robin Rosenfeld
Carol Ann Zasada

Upsilon Idaho State University

Mary Blackwell
Shirley Fender
Deborah Brouillette Smith

Phi Butler University

Carla Amos
Yvonne Buyers
Donna Cheliras Czarnecki
Gloria Beckmann Hatfield
Nickie Huber
Susan Jakab
Sandra Holt Senetar
Dayna Whitehead Stein
Phyllis Webster

Chi University of Washington

Sandra S. Arakaki
Kathy Cox Daigle
Patricia Landers
Beverly Sasser Preston
Susan Winters Rowe
Lucille K. Schimel
Sue Farrington Schleif
Cindy Klettke Trombetta

Alpha Alpha Temple University

Dusanka Dejanovic
Susan Hatch Kane
Antoinette Scota
Carolyn A. Stauffer

Alpha Beta University of Connecticut

Lydia Cybul Bilanin
Barbara Jean DeMaio
Gertrude Stephenson Hintz
Claudia Melo
Sandra Grillo Pulaski

Alpha Gamma Samford University

Teresa Ann Beasley
Paula Blankenship
Margaret Calfee Brewer
Du Thi Le
Robin McAlister
Erin McElroy
Abigail Parkerson
Wendy Thompson
Jean Crouch Warren

Alpha Delta University of Michigan

Fumiko Ikemori-Doorenbos Alpha Epsilon University of Tennessee

Cecelia Fisher
Julia Fitts Guillory
Nancy Jackson Sells
Betty Hart Tusa
Katherine Goff Wolfe

Alpha Zeta St. Louis College of Pharmacy

Marilyn K. Burton
Kristine Canham
Mary R. Grear
Donna Grimm
Neta Lard Hodge
Betty Nyhof Rawley
Jean Schallom
Susan Schlake
Karen Stryik
Cathy Paynic Weaver

Alpha Eta Long Island University, Arnold and Marie Schwartz College of Pharmacy and Health Sciences

Mary Vazquez Coombs
Hilda Rivera

"My Lambda Kappa
Sigma
experience at my
university
was important to me!"

Alpha Theta State University of New York at Buffalo

Margaret Lawton
Rose Crimald Madejski
Cheryl Merrill
Marianne Plachta
Phyllis Molisse Rogers
Esther Gramza Woods

Alpha Iota Ferris State

Donna Jean Bouckaert
Connie DeFrancesco
Jean Deupree
Christine Ezyk Duprey
Avis J. Ericson
Sue Abramovich Fehrenbach
Deborah Fransisco
Lynette Mayne Holtz
Susan Marie Keller
Catherine Boyd Murphy
Andrea Tomaszewski Nietzke

Nancy Peterson
Lori Purnell
Wynefred Halpin Schumann
Veronika Paberzs Visockis
Susan Mahoney Weigold
Sandra McFarland Wolinski

Alpha Kappa University of Georgia

Bonnie Anne Bloom
Paula Jean Bowers
Linda Elaine Doyal
Kathy E. Foster
Caroline Howard Griner
Janice Powell Linder
Judy Peeler
Karen Goldberg Small
Cynthia Elaine Vickery

Alpha Lambda University of British Columbia

Gail Dianne Bellward
Debbie Culos
Kathryn Hawkins
Jude Garrish Laird
Adele Maria Runikis

Alpha Mu University of Toledo

Lynne Baumker
Ellen Hopper
Patricia McCann Parks
Jean Sanzenbacher
Denise Schrickel
Ruthann H. Stetak

Alpha Nu University of Kentucky

Donna Ball
Karen L. Dennis
Cathy Fankell
Patience Nave Fort
Lorraine Eloise Gribbens
Patty Gregory Guinn
Roberta A. Hull
Constance Hopper Jones
Kathleen Bacon King
Karl Krause Kruschwitz
Judy Stewart Ladd
Barbara Patterson Perry
Cynthia Douglas Rorer
Darla Spaulding

Alpha Xi University of the Pacific

Terry Altmiller
Anne Gardoni DeLander
Chris Olson Frey
Fredricka Fineman
Dr. Yrena Shilling Friedmann
Gloria McCain Gong
Cisco Kihara
Grace Terese Lam
Diana M. Laubenstein
Shirley A. McCloskey
Delayne Nance
Tricia New
Mariann Annand Novarina
Norma Ross Sexton

Alpha Omicron West Virginia University

Pam Lewis Barel
Kathleen Muse Burroughs
Kathryn McDonough Daulong
Joyce Ann Fiorini
Doris Haun
Gwendolyn Smoot Necessary
Sharon Wyncooper Ober
Debbie Waddell
Alice Martz Werkman

Alpha Pi St. John's University

Eileen P. Loneragan
Valerie Perentesis

Alpha Rho Northeastern University

Claire Jukusky

Kappa University of Kansas

Noreen Shea Sesin

PLAN NOW!

National Symposium on Women in Pharmacy

ACTIVE, INACTIVE OR INERT?



Mary Jo Reilly
Kathy McGee
Jake Miller
Gloria Sabatini
Marianne Rollings
Phylliss Moret
Gloria Francke
Marily Rhudy
Charma Konnor
Paul Pierpaoli

Ken Kirk
Dorothy Wade
Stacey Ferguson
Aida Leroy
Angele D'Angelo
Patti Connery
John Ruggiero
Leonard Edloe
Carl Emswiler
Peggy Hayes
Alice Kimball

November 16-18, 1984

MARRIOTT HOTEL
Richmond, Virginia
800-228-9290

Say you are with Women's Symposium



The Virginia Pharmaceutical Association Research & Education Foundation is approved by the American Council on Pharmaceutical Education as a provider of continuing education. This program is accredited for 8 hours (0.8 CEU) C.E.

NATIONAL SYMPOSIUM ON WOMEN IN PHARMACY

The first National Symposium on Women in Pharmacy is slated for November 16-18, 1984 in Richmond, Virginia. A number of Lambda Kappa Sigma sisters along with other prominent pharmacists are scheduled to participate in the program. Sponsoring the meeting is the Virginia Pharmaceutical Association.

Coordinator for the meeting is the VPhA President-elect, Marianne Rollings, who said "it's time to get grass

roots practitioners and the 'movers and shakers' together to start doing some foundation-building for our future. These changes affect all of pharmacy, so we want to involve all pharmacists. This is not 'for women only'."

Statistically, women now exceed over 50% of the pharmacy students and approximately 25% of all pharmacists. Rollings reports that "the face of pharmacy is changing, not only in areas of practice but in the demographic distribution as well."

Important topics to be considered will include personal goal setting, the carryover of women pharmacy students'

leadership roles into the profession, women as leaders in pharmacy and as role models balancing a career and family responsibilities, equal pay for equal responsibility; as well as professional issues including the "Rx-OTC's" Switch and Preferred Provider Organizations (PPOs).

For additional information write VPhA, 3119 W. Clay Street, Richmond, VA 23230, Phone (804) 355-7941. Registration fee for the Symposium is \$60.00 (\$70 after October 15). Lambda Kappa Sigma members are encouraged to attend and share in this valuable experience.

NICE THINGS TO REPORT FROM THE TRUST TO THE TRIANGLE

The convention in Seattle was a great one. So many *nice* things happened in addition to the wonderful time everyone had in the beautiful city of Seattle surrounded by mountains. Of course we all thank Chi chapters and members from there who are Stray Lambs and came back to do their part.

One *nice* happening was the issuing of so many 50 year member certificates along with the presence of so many of them there to receive them.

To celebrate their 50th year of Lambda Kappa Sigma membership Julia Pishalski (Omicron alumnae, Detroit), Eleanor Siwan (Omicron alumnae, Detroit), Harriet Lescauski (Gamma alumnae, Chicago), and Helen Peterson (Mu alumnae, Centralia, WA), made special donations to the Trust.

This *nice* gesture shows all of us the dedication of these ladies to the future of Lambda Kappa Sigma and continuing interest of helping the collegiate and graduate members in pursuing their education in Pharmacy. We all thank them.

Among the *nice* things happening in the next 2 years was the recommendation of the Trust Liaison Committee to issue 18 Cora E. Craven grants for each of the next two years. This means that 36 grants will be available to the collegiate members.

Another recommendation was to issue 1 B. Olive Cole grant each year for the next 2 years to a graduate student member. We urge you to apply for these grants by the November 1 deadline.

Our thanks to the rest of you who made donations to the Trust at the convention.

Since the last Triangle was published we would like to add some more names to the list of donors... in appreciation:

Gloria Bernstein
Tau chapter
Alpha Lambda chapter
Alpha Zeta chapter
Rashieda Shah
Julia Pishalski
Harriet Lescauski
M. Helen Peterson
Rosetta and Geraldine Manzione
Marilyn Haberle
Eleanor Siwan
Gloria Doughty
Tau collegiate chapter
Omicron Alumnae chapter

Thanks to all of you who remembered the Lambda Kappa Sigma Educational Trust. Remember your donations are tax exempt, and we have a triple exemption from the IRS for the Trust, the recipient, and the donor.

Let's have a record amount donated by the collegiate chapters before the next issue of the Triangle. Think about a great money-maker just for the Trust. It helps you! It is the source of your Grants.

Respectfully submitted,
Adele Lowe
Chm. T.L.C.

HOW TO HAVE FUN - WITHOUT HAZING

As a result of the resurgence of hazing on campuses and several TV shows and movies during the 1978-79 season, PFA, in 1979, passed a motion to "go on record as continuing and reaffirming its long-standing policy against pledge hazing, and deploring the erroneous fraternity image conveyed by recent motion pictures and television programs, and further that a press release to this effect be issued by the Board."

When I became Executive Director of Phi Chi Theta, I erroneously thought I would be putting the problem of hazing behind me - after all this was a "professional" organization, with a shorter pledge period, and *these* were not housed chapters. Imagine my surprise when at the first PFA Convention I attended, this was one of the main topics. At that 1981 PFA Convention, a resolution was passed once again reaffirming PFA's stand against hazing.

At this September's PFA Convention, a post card will be included in our packet of materials, asking a two-part question: "During the past year, what has your fraternity done about hazing; and about encouraging and/or participating in a professional fraternity council?" This will be repeated at the 1985 Convention. It is hoped this will raise the consciousness level; and stimulate action by our members.

According to a San Diego University professor who has just completed a study on hazing/harassment, hazing is not limited to collegiate fraternal organizations; but is found wherever there is an "in group" and someone who wants to be a part of that group. The reason given by the "in group" is "you can't just belong until you've made your 'right of passage'." Although this seems juvenile, she states it exists wherever one enters a new environment - school, work, community, or personal.

Several PFA fraternities include a copy of their policy on hazing with the fall mailing to chapter presidents. Lambda Kappa Sigma (Pharmacy) puts its statement on the front of its pledge program: "Hazing may be defined as any situation created, or action taken, either intentionally or unintentionally, on or off the college campus, to produce physical

or mental discomfort, embarrassment or ridicule, or possibly cause physical harm or injury or any activity on the part of the pledges or members which might possibly violate any local, state, or federal laws, including fraternity law." It concludes by stating that a constructive pledge program and initiation that upholds the dignity of the fraternity must be followed by all chapters. Many of our member organizations are co-educational. It is the feeling of one Executive Director that it is this factor that reduced hazing practices within his fraternity. The group representatives with whom I spoke have experienced a varying degree of hazing during the past year, from none to a very definite problem. Methods of dealing with this problem have ranged from dealing through the chapter advisor to campus visitations by national officers. Recently, I attended a Phi Chi Theta regional meeting, and was astounded to hear the district director suggesting that other chapters might want to copy one chapter that blindfolds its pledges and leads them around the campus for about 30 minutes, and then returns to a member's home for pledge skits and songs prior to the initiation service. I quickly interjected that this was hazing and other activities would be more suitable, and I would not recommend this procedure.

Most organizations try to build esprit de corps and a fraternal feeling through such projects as fund raisers (perhaps for a specific purpose), pledge/active appreciation days, and/or service projects on the campus or within the community. Many have a social activity to celebrate the completion of the pledge period.

In conclusion, I would like to share with you Lambda Kappa Sigma's statement on the design of a pledge program, as I feel it is what each fraternity is striving to achieve: "The pledge program should be designed and well planned to capture the enthusiasm of the pledges and develop a commitment on their part to the fraternity - by teaching them - by helping them participate - by keeping them feeling needed and wanted - by guiding them to maturity and growth. A Lambda Kappa Sigma pledge was chosen for membership because of her potential leadership, initiative, and good moral character. It is our responsibility to help her develop these qualities during the pledge period, so that at initiation she is a highly motivated, knowledgeable, committed member who is willing and able to fully serve the fraternity and, in turn, to fully enjoy the benefits and rewards of fraternity membership.

-Jill Campbell, Phi Chi Theta (Business & Economics), Panelist at 1984 IRAC Meeting.

Ethel J. Heath Key Recipients



Salvinaz Parpia
Alpha Lambda



Cynthia Ann Brown
Alpha Epsilon



Carol Ann Sanders
Alpha Kappa



Susan Leigh Ward
Alpha Kappa



Christine Schultz
Mu



Carole Ann Dougherty
Mu



Carolyn Lim
Pi



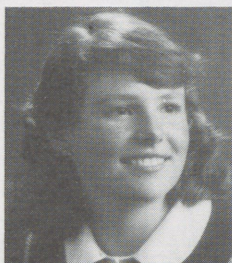
Rebecca Lynne Callicutt
Alpha Epsilon



Cindy Delap
Alpha Nu



Kathleen Collin
Alpha Lambda



Melva Gilks
Alpha Lambda



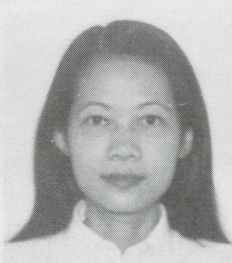
Marian Watmough
Alpha Lambda



Brenda Marie Gajewski
Alpha Beta



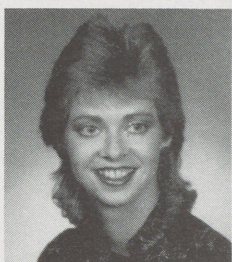
Mary Beth Kerr
Tau



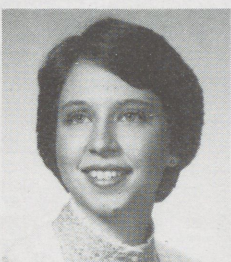
Du Thi Le
Alpha Gamma



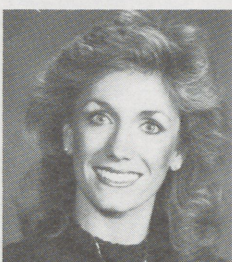
Leisa Marshall
Alpha Kappa



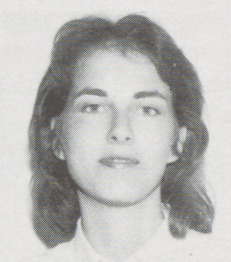
Mary Jo Byrne
Alpha Zeta



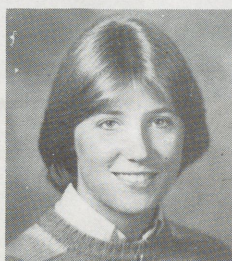
Sandra Elaine Scales
Alpha Kappa



Leanne Pullins
Alpha Nu



Joanne Polkowski Von
Mach Omicron



Mary P. Hanrahan
Alpha Kappa



M.C. Helene Sauve
Alpha Lambda

Not Pictured
Katherine Denise
Hammond
Omega

Lisa H. Gillespie
Alpha Gamma

Sandy Kline
Alpha Mu

Coming up in the next TRIANGLE

A Lambs Trip to the Soviet Union and China.....by Becky Hunter



Mixing herbs for a prescription at a commune traditional pharmacy.

Women's Health Issues

(Continued from page 1)

Lambda Kappa Sigma and Kappa Epsilon which demonstrates that we are professional organizations with true concern for women and women's health issues. The production of a videotape which could be shown on the subject is also being developed. Future directions of the committee might include establishing a Speaker's Bureau so that other women's organizations could use us as a resource. The committee needs your support and would welcome any thoughts or suggestions. Serving as co-chairmen for the committee are Judy Riffie and Rosalie Sagraves.

Respectfully submitted,
Women's Health Issues Committee
Avis Ericson, Massachusetts College of Pharmacy; Boston, MA
Judy Riffie, University of Texas at Austin

Jeanne Hawkins Van Tyle, Butler University, Indianapolis, IN
and representing Kappa Epsilon
Rosalie Sagraves, University of Texas at Austin
Judy Osburn, North Dakota State, Fargo

IN MEMORIAM

It is with deep regret that we inform you of the death of LINDA T. RODGERS, immediate past Grand President of KAPPA EPSILON. Linda died of cancer on September 21, 1984. The sisters of LKS will remember Linda for her dedication to women in pharmacy, and their advancement, and her interfraternal spirit. She is survived by her husband, Jerry, and two sons. A memorial scholarship fund has been established in her name.

1984-1986 GRAND COUNCIL LAMBDA KAPPA SIGMA

GRAND PRESIDENT

Patricia Clancy Kienle, Bellefonte Apts.,
Venezia C-4, Scranton, PA 18505
(717) 961-8589

GRAND VICE PRESIDENT

Gloria Hartman Doughty, 424 Greenbriar
Rd., Lexington, KY 40503
(606) 277-0664

GRAND SECRETARY

Becky Sue Hunter, Corbin Mobile Home
Park #96, Corbin, KY 40701
(606) 528-0126

GRAND TREASURER

Nancy Horst, 17404 Ashworth Ave.N., Se-
attle, WA 98133
(206) 542-6471

NORTH EASTERN REGIONAL SUPERVISOR

Michelle A. DeBalko, 437 W Oak St.,
Hazleton, PA 18201
(717) 454-4403

MIDEASTERN REGIONAL SUPERVISOR

Ruth A. Brown, 520 Bartlett Ave., Ridley
Park, PA 19078
(215) 461-6273

MIDWESTERN REGIONAL SUPERVISOR

Donna Jean Dancer, 2317-16 E. Jolly Rd.,
Lansing, MI 48910
(517) 887-2930

SOUTHERN REGIONAL SUPERVISOR

Luanne Betz, 802 Stone Harbor Pkwy,
Marietta, GA 30060
(404) 433-1069

WESTERN REGIONAL SUPERVISOR

Donna Rae Fujii, 3310-24th S., Seattle,
WA 98144
(206) 723-2079

HONORARY ADVISOR

Marilyn Haberle, 12543 Elaine Dr., Des
Peres, MO 63131
(314) 822-9643

HONORARY ADVISOR

Judy Riffie, Rt. 1 Box 360, Cedar Creek,
TX 78612

(512) 321-3789

HONORARY ADVISOR

Avis J. Ericson, 48 Eaton Road West,
Framingham, MA 01701

(617) 877-4619

INTERNATIONAL OFFICE OF LAMBDA KAPPA SIGMA

P.O. Box 981, Claremore, OK 74018
(918) 342-1711

EXECUTIVE DIRECTOR:

Mary Grear, 1209 N. Miller Dr.,
Claremore, OK 74017 (918) 342-5620

STAFF:

Jan Hallock, Pennie Savage



The Blue and Gold Triangle is the official
publication of Lambda Kappa Sigma, In-
ternational Pharmacy Fraternity pub-
lished quarterly by Lambda Kappa
Sigma.

Mrs. Mary Grear
Editor and Executive Director
P O Box 981
Claremore, OK 74018

Lambda Kappa Sigma is a member of
the College Fraternity Editors Associa-
tion and the Professional Fraternity As-
sociation.

COMING UP!

October 15

Blue and Gold
TRIANGLE deadline
for articles and
reports to be sent to
the International
Office.

November 1

Deadline for
applications for the
Cora E. Craven Grants
and Dr. B. Olive Cole
Graduate Grant
National Symposium
on Women in
Pharmacy, Richmond
Marriott, Richmond,
Virginia

November 16-18

ASHP Midyear
Meeting, Dallas, TX

December 4

LKS Coffee Hour,
ASHP Midyear
Meeting, Dallas, TX

February 15,
1985

Blue and Gold
TRIANGLE deadline
for articles and
reports

REGIONAL MEETINGS

Summer,
1985

Midwestern Regional (Nu
Chapter), Des Moines, Iowa
Western Regional (Alpha Xi
Chapter), Stockton,
California

Fall, 1985

Northeastern and
Mideastern Regional, New
York, New York

Southern Regional (Alpha
Sigma Chapter), Houston,
Texas

INDIANAPOLIS, INDIANA 29th BIENNIAL CONVENTION

The gavel had just fallen closing the
28th Biennial Convention of Lambda
Kappa Sigma, when work began in pre-
paration for the next Convention in Indian-
apolis, Indiana. The dates have been set
for August 5-9, 1986. Mark your calendar
now and plan on joining us for all
the "special" times that we share at
Convention.



Address Correction Requested

LAMBDA KAPPA SIGMA
International Pharmacy Fraternity
P.O. Box 981
Claremore, OK 74018

Non-Profit Organization
U.S. Postage
PAID

Permit No. 6624
Indianapolis, IN

LKS 16121
Marilyn Frances Harris
3989 Beechwood Blvd
Pittsburgh

PA 15217